



King's Lynn Area Consultative Committee
Thursday, 29th June, 2023 at 4.30 pm
**in the Council Chamber, Town Hall, Saturday Market
Place, King's Lynn PE30 5DQ**

**Reports marked to follow on the Agenda and/or Supplementary
Documents**

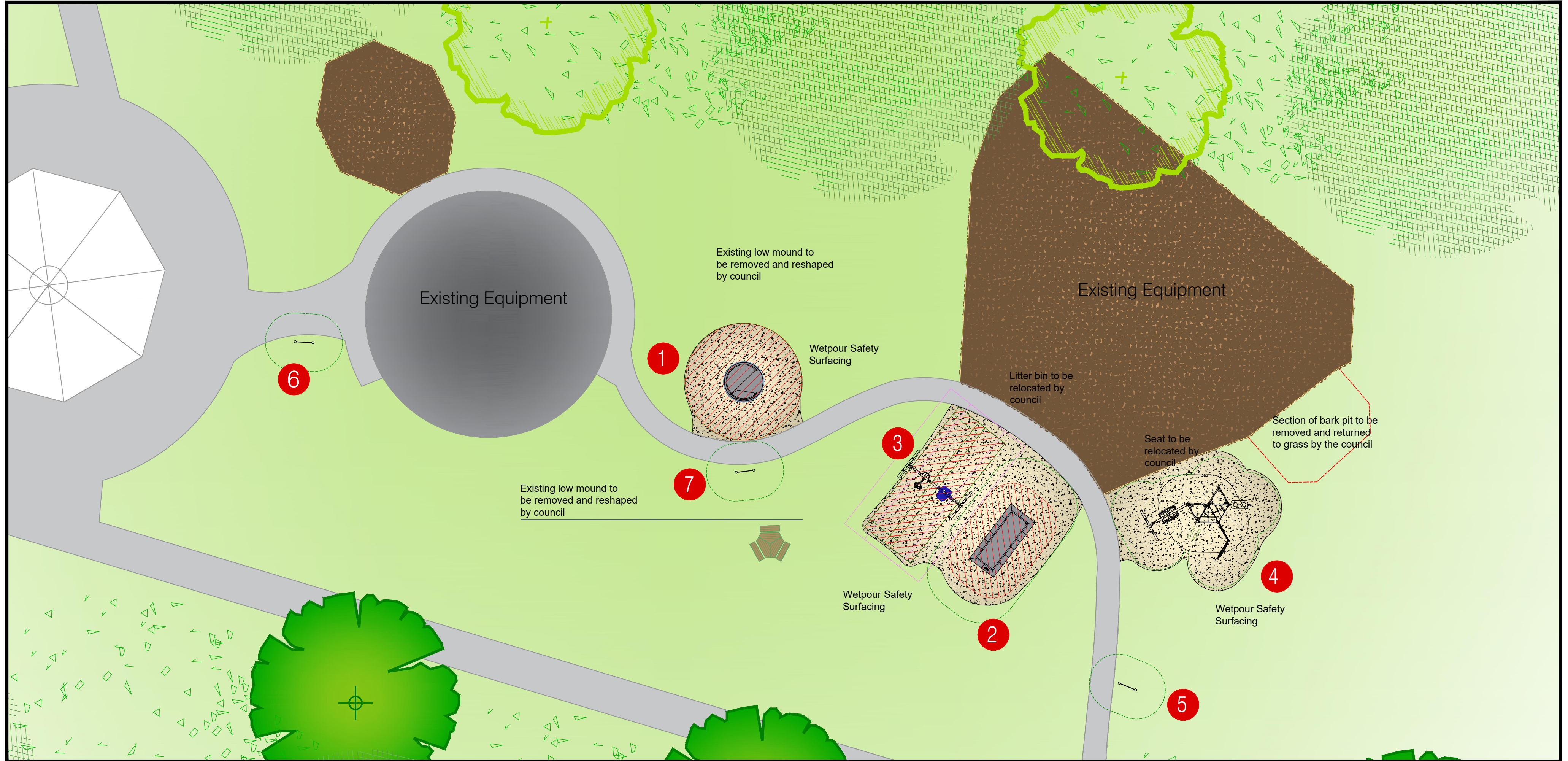
1. **Update on the provision of accessible play equipment at The Walks**
(Pages 2 - 4)

Contact

Democratic Services
Borough Council of King's Lynn and West Norfolk
King's Court
Chapel Street
King's Lynn
Norfolk
PE30 1EX
Tel: 01553 616394
Email: democratic.services@west-norfolk.gov.uk

The Walks Inclusive Play Area

Kings Lynn & West Norfolk Borough Council

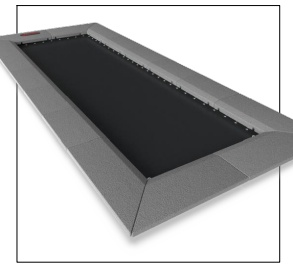


Equipment

1. Wheelchair Carousel
Ref PCM157
Total height 70cm
Fall height 100cm
Age range 2+ years
DDA Accessible



2. Rectangular Jumper
Ref JUM10501
Total height 3cm
Fall height 100cm
Age range 4+ years
DDA Accessible



3. Swing Frame with Mirage Seat & You & Me Seat
Ref PCM157
Total height 257cm
Fall height 135cm
Age range 2+ years
DDA Accessible



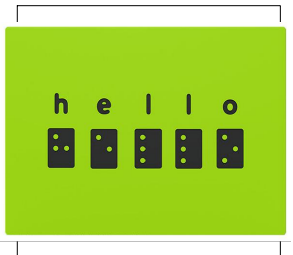
4. FunPoint Sensory Ultimate
Ref PCT802
Total height 310cm
Fall height 150cm
Age range 1+ years
DDA Accessible



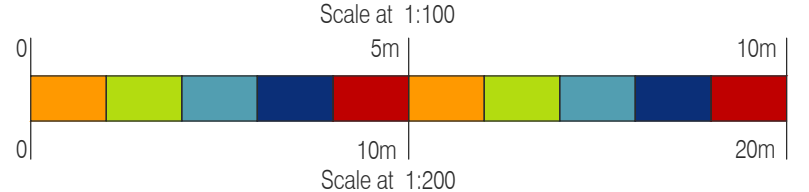
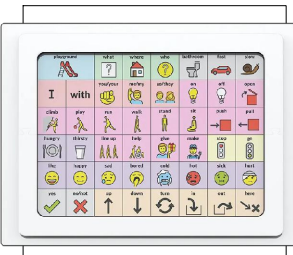
5. Hello Sign Language Play Panel
Ref FIHESUK3
Age range 2+ years
DDA Accessible



6. Hello Braille Play Panel
Ref FIHEBA6
Age range 2+ years
DDA Accessible



7. Communication Play Panel
Ref FIPLCO6
Age range 2+ years
DDA Accessible



Design assumes the site will be levelled by other (max. gradient 1:100), free draining and with good access
Quotation and design is submitted site unseen, we reserve the right, following a full site survey to amend the design appropriately.
Areas and dimensions shown are critical for compliance with European safety standards En1176 & En1177, If in doubt ask.
Grass areas should be well established prior to grass mat safety surfacing being laid.

KOMPAN Ltd.
Serenity House
Milton Keynes
MK4 1GA

www.KOMPAN.co.uk
T:01908 201002
F:01908 201007
E:KOMPAN.UK@KOMPAN.com

NOT FOR TENDER ISSUE.
©copyright of this drawing remains the property of KOMPAN Ltd. and the KOMPAN group. This drawing may not be reproduced without prior permission of KOMPAN Ltd.
Any infringement will be pursued.

Project THE_WALKS_INCLUSIVE_PLAY_AREA	Designed by J.O
Client KINGS_LYNN_&_WEST_NORFOLK_BC	Date 17/05/2023
Drawing No. CAS-221716-F7B6R0	Scale 1:150@A2
	Revision -



GROUND LEVEL TRAMPOLINE



AGE 0-12+ RANGE

17+ PLAY FEATURES

33+ USERS

Our Design at THE WALKS INCLUSIVE PLAY AREA ensures that users of all ages and abilities can learn, imagine and play together!



THE WALKS INCLUSIVE PLAY AREA

KING LYNN & WEST NORFOLK COUNCIL

WHEELCHAIR CAROUSEL



INCLUSIVE PLAY



BRaille HELLO PLAY PANEL

OPTICAL PANELS

SENSORY PANELS

GROUND LEVEL TRAMPOLINE

INCLUSIVE SWING

HANG OUT POD

MUSICAL BONGOS



Communication Play Panel

FUNPOINT SENSORY STATION

DRAWING WALL ROLLERS

PLENTY OF GROUND LEVEL PLAY OPPORTUNITIES!

XYLOPHONE PLAY PANEL





SCAN ME WITH YOUR SMART PHONE

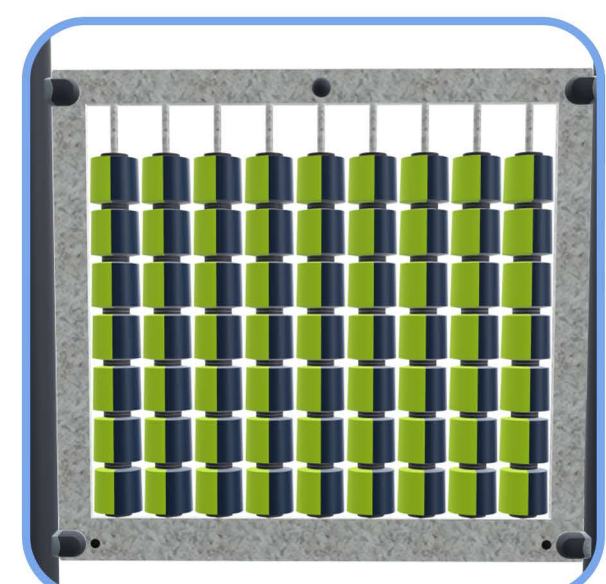
33+ USERS
AGE 2-12 RANGE
17+ PLAY FEATURES



ROLLER DRAWING WALL

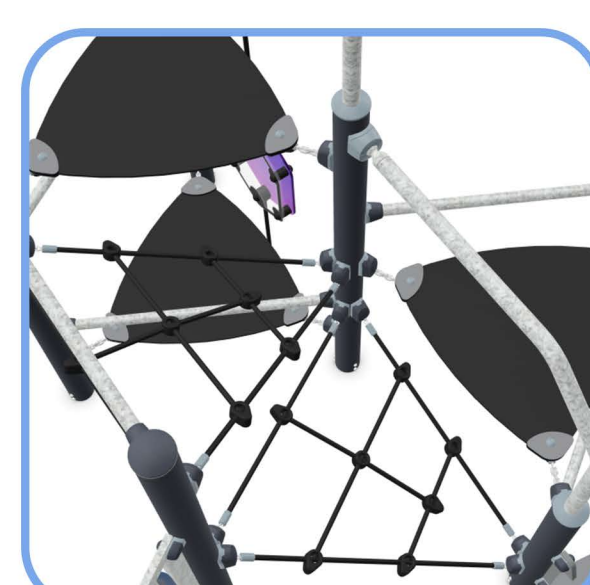
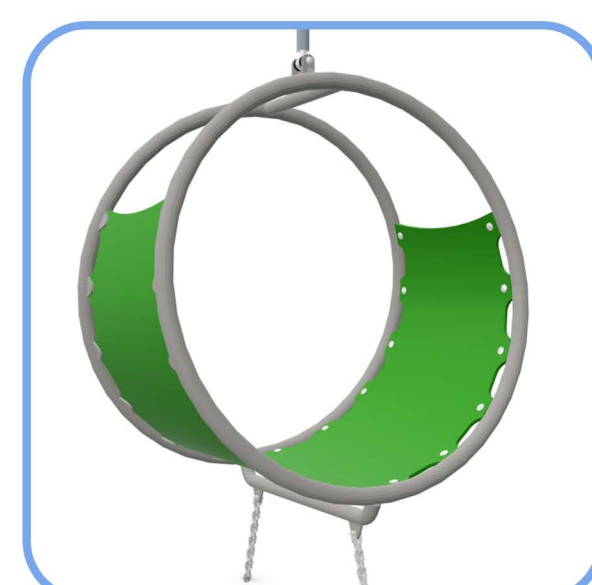
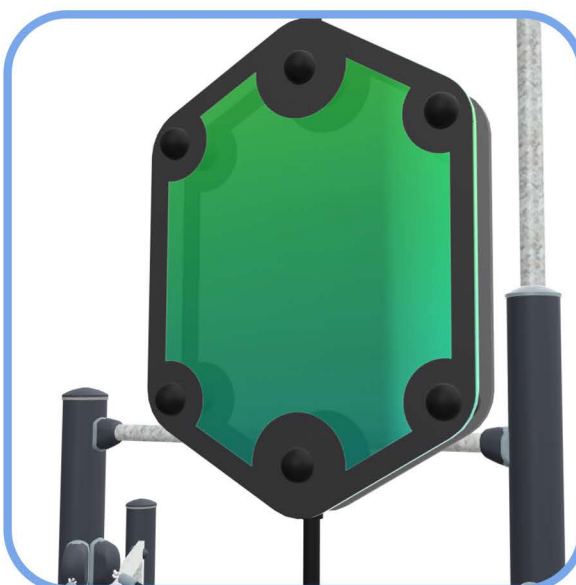
BONGO DRUMS

ULTIMATE SENSORY FUNPOINT



GROUND LEVEL ACTIVITIES

- OPTIC PANELS
- DRAWING WALL
- BONGO DRUMS
- HANG OUT POD
- CLIMBING NETS
- MEMBRANE SEATS
- XYLOPHONE PLAY PANEL



THE WALKS INCLUSIVE PLAY AREA

KINGS LYNN & WEST NORFOLK BOROUGH COUNCIL

MULTI LEVEL PLAY OPPORTUNITES
THANKS TO ITS TRANSPARENT DESIGN, USERS OF ALL ABILITIES CAN BE INVOLVED IN PLAY. THE MANY SENSORY, MOVEABLE ACTIVITIES ADD TO DRAMATIC PLAY, STIMULATING LANGUAGE AND COMMUNICATION SKILLS



THE UNIT FORMS A WHOLE PLAYGROUND WITH ITS DIVERSE PLAY ACTIVITIES.

TRANSPARENT LAYERED PLAY



HANGOUT POD



HANGOUT POD

OPTICAL PANELS

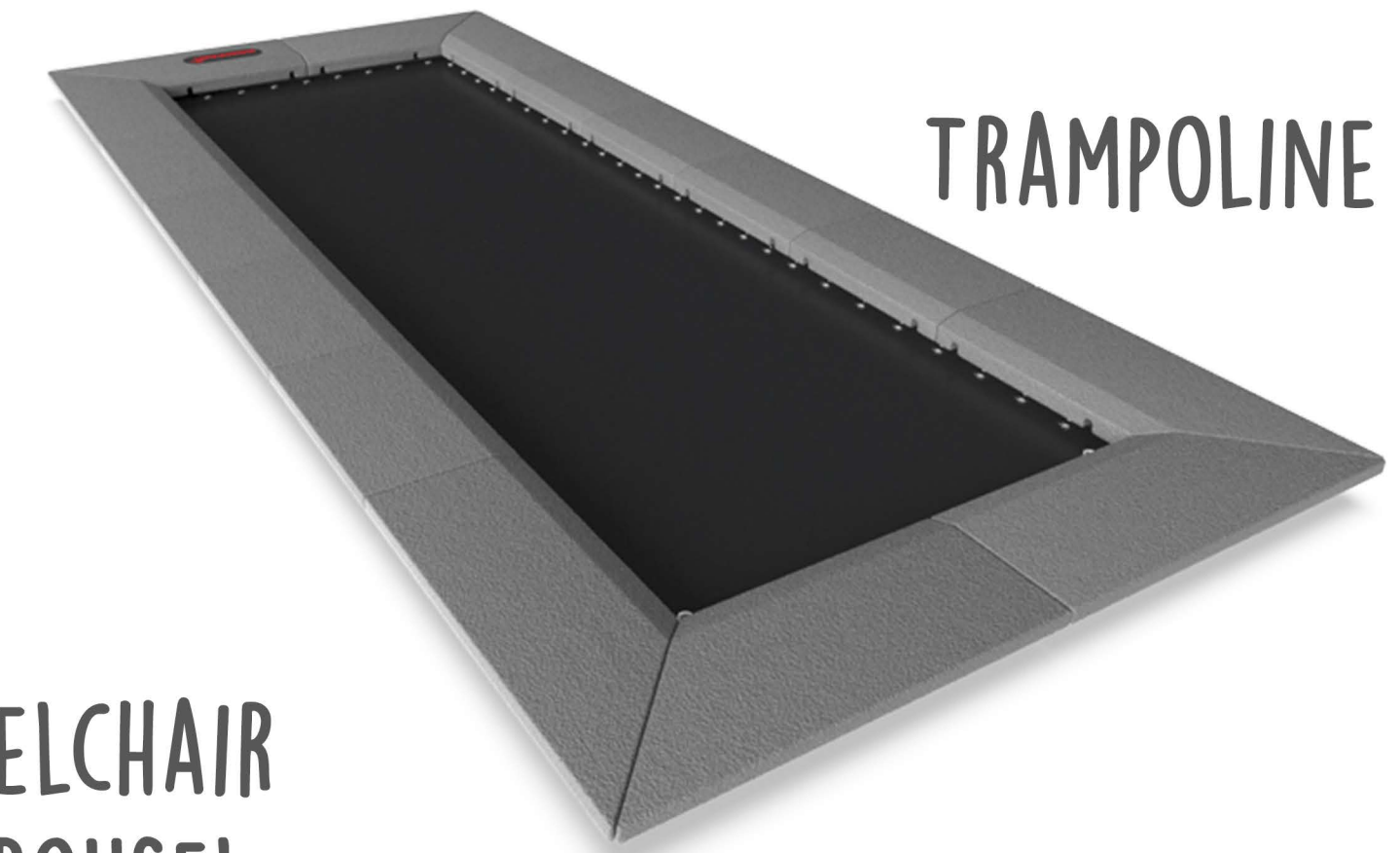
ANGLED CLIMBING NETS

MEMBRANE PLATFORMS

XYLOPHONE



SWING WITH IX YOU AND ME SEAT AND IX MIRAGE SEAT

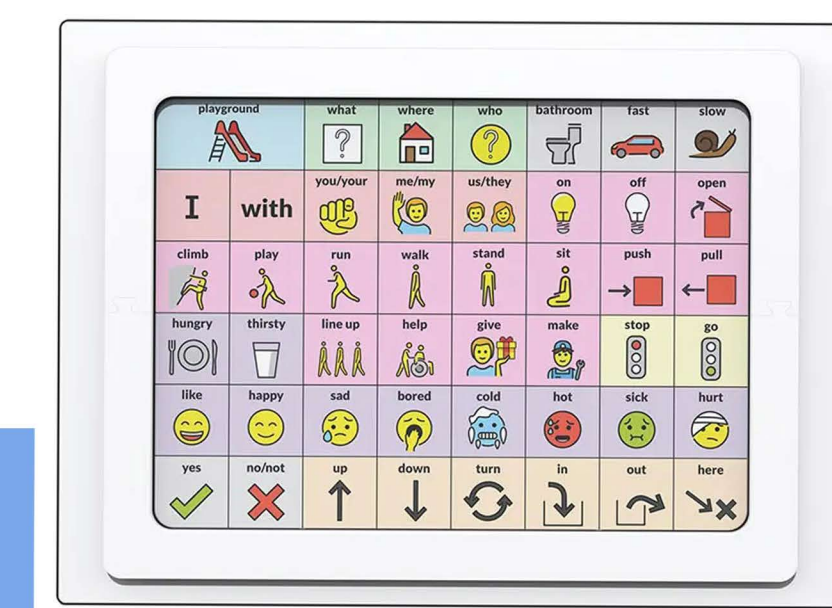


TRAMPOLINE

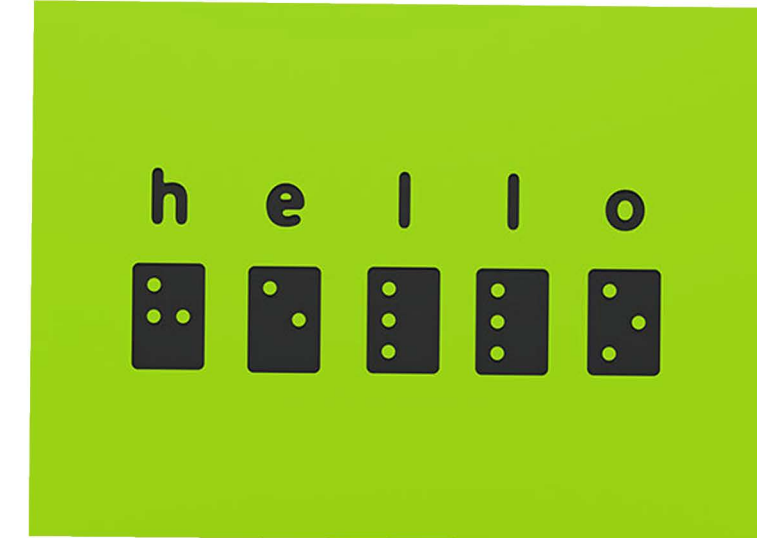
WHEELCHAIR CAROUSEL



COMMUNICATION PANEL



SIGN LANGUAGE PANEL



BRILLE PANEL



- CLIMBING
- BALANCING
- CLAMBERING
- ROCKING
- SOCIAL PLAY
- ROLE PLAY
- STRENGTH
- INCLUSIVITY
- TACTILE
- EXPLORING